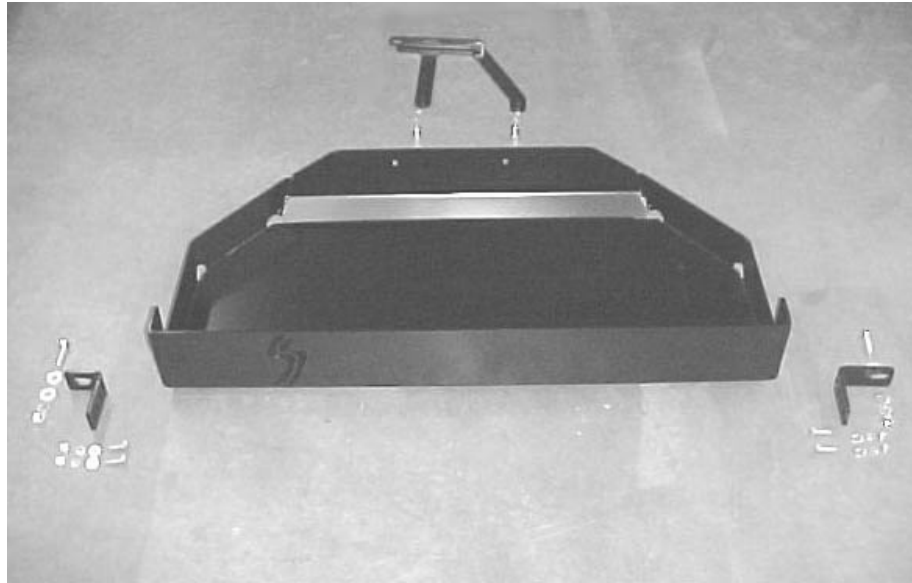




## Gas Tank Skid Plate Installation Instructions for 1997-2006 Jeep® TJ Wrangler

Thank you for purchasing your new Skid Row Offroad gas tank skid plate. It is designed to give you peace of mind while traversing even the toughest trails.

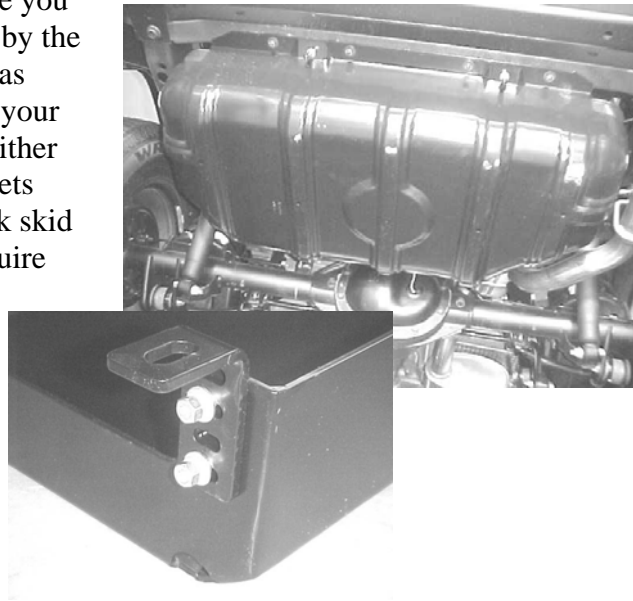


Your skid plate package should come complete with the following parts:

1. (1) Gas Tank Skid Plate
2. (1) Left Mounting Bracket (shown below)
3. (1) Right Mounting Bracket (shown below)
4. (1) Front Mounting Bracket
5. (6) 5/16-18 UNC x 1" Carriage Head Bolts
6. (6) 5/16-18 UNC Hex Nuts
7. (6) 5/16" Lock Washers
8. (6) 5/16" Flat Washers
9. (2) 7/16-14 UNC x 1.5" Hex Head Bolts
10. (2) 7/16-14 Hex Nuts
11. (4) 7/16" Flat Washers
12. (2) 7/16" Lock Washers



**Step 1:** Determine which factory gas tank skid plate you currently have. There were two different styles used by the factory and the change from old style to new style was made some time during the 2001 model year. While your new Skid Row Offroad skid plate is designed to fit either style, you will have to configure the mounting brackets differently to fit them. The new style factory gas tank skid plate is shown in the picture to the right and will require that the rear mounting brackets be installed in their uppermost position as is also shown.



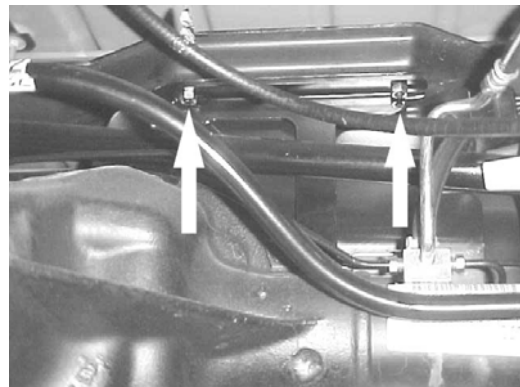
**Step 2:** Loosely attach both rear mounting brackets to the skid plate using the 5/16-18x1.0" carriage bolts, 5/16-18 nuts, and washers provided. The bolts should be installed from the inside of the skid plate. The longer bracket is installed on the passenger side of the vehicle to reach over the exhaust pipe.

**NOTE:** If you wish to use the factory rear tow hook, simply install the driver's side bracket in its lowest position. Then bolt everything together using the tow hook bolt instead of the 7/16" bolt provided.

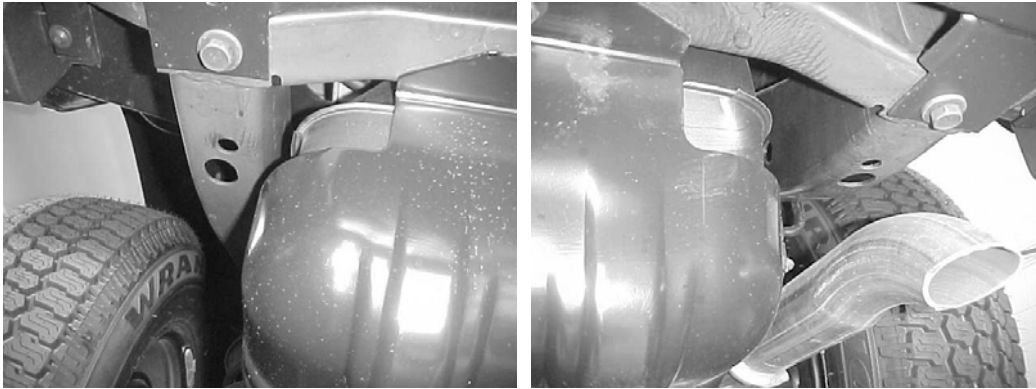
**Step 3:** Insert the remaining two 5/16-18x1.0" carriage bolts into the two square holes at the front of the skid plate with the threads facing outward. Place a small piece of tape around the threads to prevent them from falling out while positioning the skid plate as shown to the right.



**Step 4:** Remove the two nuts at the front of the factory skid plate (Shown by arrows in photo at right.) and loosely install the front bracket using the original nuts just removed. On some models, these nuts may have a large flange and will not fit with the bracket installed. In this case use the 5/16-18 nuts and lock washers included in the hardware packet.



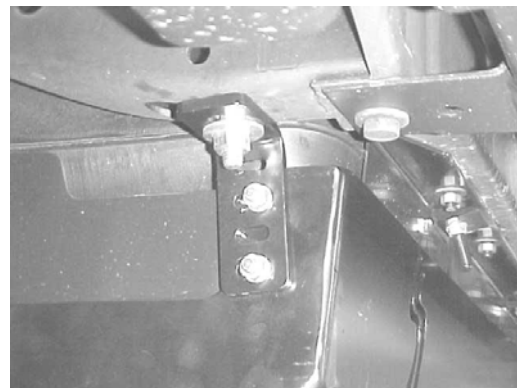
**Step 5:** On each side insert one of the 7/16-14 hex head bolts with a flat washer into the chassis through the larger of the holes shown below. Then position it with the threads facing downward through the smaller hole. If your TJ doesn't have these smaller holes from the factory, they will have to be drilled. Go to the next step.



**Step 6:** Raise the skid plate into position under the gas tank using a floor jack. While raising the skid plate fit the two carriage bolts at the front of the skid plate into the holes in the front bracket. Use the lower most holes for the newer style factory skid plate and the upper ones for the older style. Push the skid plate as far rearward as possible for maximum differential clearance. Also, push the skid plate as far as possible to the driver's side to gain clearance for the exhaust system. If you were able to insert the two 7/16 bolts into the chassis in Step 5, then make sure to get them through the slotted holes in the rear brackets.

**Step 7:** If your TJ did not have the smaller holes in the chassis they will have to be drilled. It will be easier to get it right if you first position the skid plate with the brackets installed, as described above. First center punch the hole locations, and then drill a small hole of about 1/8" in size. Then drill the holes to 1/2" diameter and install the 7/16" bolts with flat washers through them.

**Step 8:** Install the 7/16" nuts with flat washers and lock washers. To do this you may need to slip an 11/16" box end wrench through the large hole to hold the bolt head. Install the 5/16" nuts and washers at the front of the skid plate. Tighten all hardware once everything is fit together.



**Step 9:** You may find that you need additional exhaust system clearance as shown in the photo below left. Simply bend the exhaust hanger bracket shown below right to gain this clearance. You can also remove the threads that are protruding past the nut with a hacksaw.



We hope you enjoy your Skid Row Offroad gas tank skid plate!

Sincerely,  
**The Staff at SFK Manufacturing, LLC**



*You could win a cool Skid Row Offroad  
jacket customized just for you  
by registering your new purchase at  
[www.SkidRowOffroad.com/registration/](http://www.SkidRowOffroad.com/registration/)*

Annual Drawing to be held January 1<sup>st</sup>. Winner to be selected from all entries from prior year.  
All entries must be received by December 31<sup>st</sup> to be included in drawing.  
One entry per person per Skid Row Offroad product purchased.

**SFK Manufacturing, LLC**  
PO Box 306, Shermans Dale, PA 17090  
Phone 717-582-3640  
Fax 717-582-2640

[www.SkidRowOffroad.com](http://www.SkidRowOffroad.com)